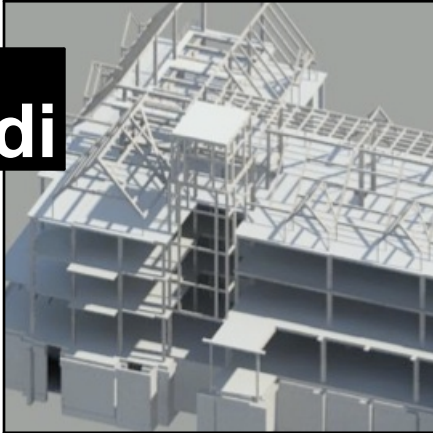


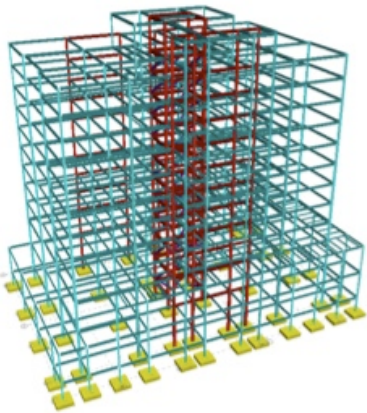
275 East Liberty / Ann Arbor, MI 48104
(734) 213-6091
FAX 213 6087 / www.strudesign.com

S T R U C T U R A L D E S I G N I N C O R P O R A T E D

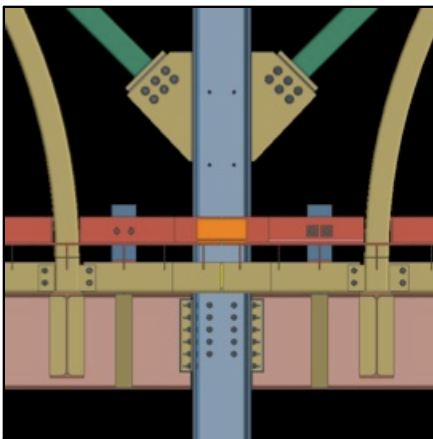
sdi



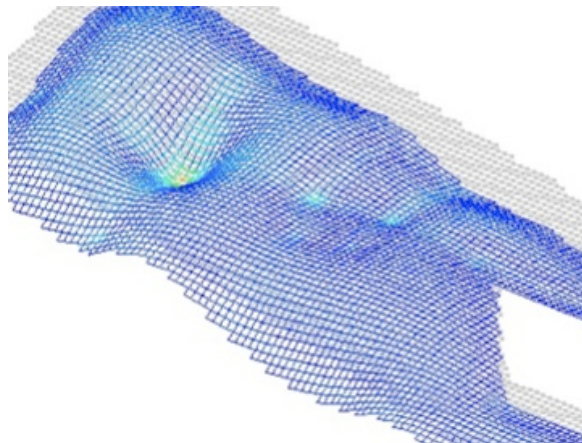
UM Law School, Revit



4Eleven Lofts, RAM



Michigan Stadium, SDS2



MSU Museum w/ Zaha Hadid, MultiFrame

BIM

sdi is actively engaged in developments in Building Information Modeling, as well as structural analysis modeling, fabrication modeling, and electronic document review protocols. Recognizing the fast pace of change in our industry sdi is committed to practical application of current BIM technology and hosted a seminar for construction leaders from around the state on developments in Integrated Project Delivery procedures.